

MYDASH

32GB Digital Photo Frame
Model: MD801



USER GUIDE

Official E-mail : Support@imydash.com

Contents

1. Product Diagram	4
1.1 Remote Control	4
1.2 Back side Buttons	5
1.3 Back side of the frame	5
2. Installing & Replacing the Battery	5
3. Getting Started	6
4. Operating Instruction	6
4.1 Main menu	6
4.2 Memory	7
5. Photo	7
6. Music	8
7. Video	9
8. Calendar	9
9. File	10
10. Setting	11
10.1 Photo setup	12
10.2 Calendar setup	12
10.3 Video setup	12
10.4 Music setup	12
10.5 System setup	13
11. Screensaver	13
12. PC Connection	14
13. Troubleshooting Guide	15

Thank you for purchasing MYDASH MD801 Digital Photo Frame. This is the Quick Start Guide, which provides you with basic operations' instructions. Please read it carefully before using the product. We do provide 12 months warranty. If you have any problems or suggestions, please feel free to contact us by amazon message, or send an email to our official E-mailbox. MYDASH offers 24/7 online support service

official E-mail: Support@mydash.com

Cautions

Precautions and maintenance

- For indoor use only.
- To avoid risk of fire or electric shock, do not expose the unit to moisture or condensation.
- To avoid overheating, do not block the ventilation holes on the back of the Digital Photo Frame. Please allow at least a 10 cm gap all around the product.
- Keep the Digital Photo Frame out of direct sunlight, fire or the like.
- Do not dismantle the Digital Photo Frame. There is a risk of electric shock and there are no user-serviceable parts inside. Dismantling the Digital Photo Frame will void your warranty.

Please read this User Manual carefully to learn the correct way to use the Digital Photo Frame. Please retain the manual for further use.

Cleaning the IPS Screen

- Treat the screen carefully. Because the screen of the Digital Photo Frame is made of glass and it would easily be broken or scratched.
- If fingerprints or dust accumulate on the IPS screen, we recommend using a soft, non-abrasive cloth such as a camera lens cloth to clean the IPS screen.
- Moisten the cleaning cloth with the cleaning solution and apply cloth to the screen.

WARNING:

To reduce the risk of electric shock, do not expose the unit to rain or excessive moisture.

This device is intended for private use and not suitable for commercial use!

Packaging Check List:

- 8 inch digital photo frame
- AC/DC adaptor
- User manual
- Bracket stand
- Remote control
- Warranty card

Product Specifications

Features

- Adapter: Input: AC 100/240V-50/60Hz Output DC 5V/1A
- Display: 8" IPS SCREEN, 1920 x 1080 resolution, Aspect Ratio: 4:3
- Supports JPEG,PNG, BMP format picture browsing, scaling; Slideshow, supports auto play with multiple special effects, supports background music playback;
- Clock and calendar display: supports calendar, month calendar and clock display;
- Supports MP3,MP2,MP1,WMA,OGG,APE,FLAC,WAV,AAC and other audio file format playback;
- Supports up to 1080P (1920 x 1080 resolution) of RMVB,MKV,MOV,M4v,MPG,FLV,AVI,VOB,DAT,MP4,3GP video file format playback; Can set for system parameters and functions;
- Supports a large variety of cards, including: SD, SDHC, MMC, etc., and supports software upgrading via SD card; (Our digital photo frame has built in 32GB memory)
- Supports USB2.0/mini USB, can be configured as USB OTG;supports a large variety of U disk, MP3 and other USB devices;
- Support infrared remote control.
- Support Motion Sensor

Trouble shooting/warranty

MYDASH offers 12 months warranty card (included in the box) and 24/7 customer support.

ACTIVATE YOUR 12-MONTH WARRANTY. Register within 7 days after receiving your new product by visiting this link:

www.imydash.com/warranty

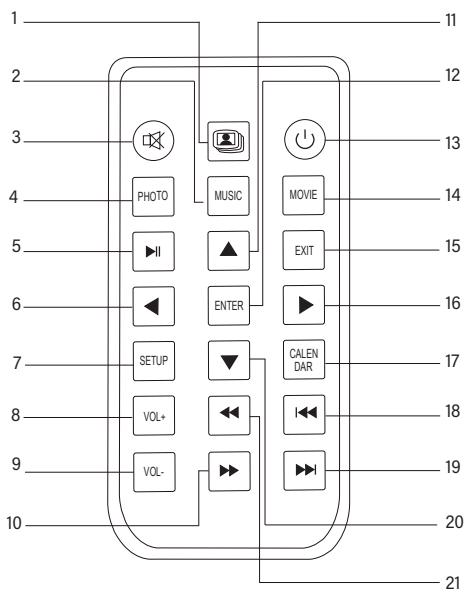
If you face any trouble operating the Digital Photo Frame or if there is any broken item, please don't hesitate to contact us and we will guide you through the process of fixing your problem.

E-mail: support@imydash.com

Tel: +1 (347) 708-1733

1. Product Diagram

1.1 Remote Control



1. Slide show with background music
2. Music playback mode
3. Switch off the sound
4. Photo playback mode
5. Play/Pause: During playing, press this button for pause, repress for play
6. Left Directional key
7. Accessing the settings menu
8. Turn up the volume
9. Turn down the volume
10. Fast forward
11. Up Directional key

12. Press to confirm
13. Power on/off
14. Movie playback mode
15. Return to upper menu
16. Right Directional key
17. Enter the calendar mode directly
18. Move back to previous music or video file
19. Move forward to next music or video file
20. Down Directional key
21. Fast backward

1.2 Back side Buttons

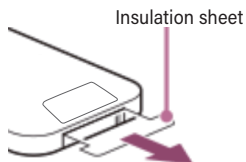
	1	Power On/Off
	2	Up/Previous
	3	Play/Pause/OK
	4	Left/Volume-
	5	Right /Volume+
	6	Down/Next
	7	Menu/Exit

1.3 Back side of the frame

	1	SD/MMC/SDHC Card Reader
	2	Headphone Output
	3	USB 2.0 Port
	4	Mini USB Port
	5	DC Power Input

2. REMOTE CONTROL OPERATION

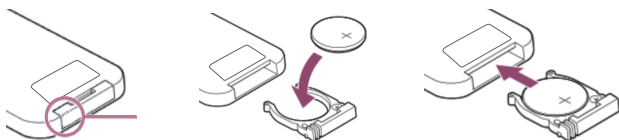
The illustrative drawings below are only for reference.



The battery is already installed and an insulation sheet is inserted into the remote control battery compartment.

Remove the insulation sheet before using the remote control.

The remote control will stop functioning when the battery is run down. In this case, follow the instructions below to replace the battery.

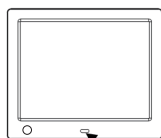


1. Press down on the tab and insert your fingernail into the slit to pull out the battery case.
2. Place a new CR2025 battery in the battery case with the + side facing up.
3. Insert the battery case into the remote control until it clicks.

NOTE: If the remote control is not used for a long period of time, please remove the battery from the compartment. Do not heat batteries or dispose of them in fires. Do not dismantle, deform or modify batteries.



The buttons on this remote control perform the same functions of those on the unit and display.

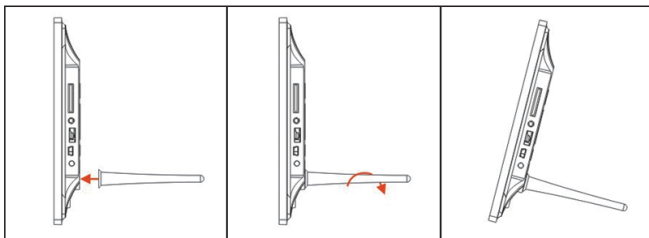


Sensor

During operation, point the remote control towards the sensor on the main unit. The remote control works best at a distance less than 3m and at an angle of up to 30 degree to the front of the unit. No obstacles may stand in the way between remote control and infrared sensor and do not place the remote control in direct sunlight. If the remote control fails to work even when it is operated near the main unit, replace the battery.

3. Getting Started

- Screw the support in the appropriate hole on the back of the unit:



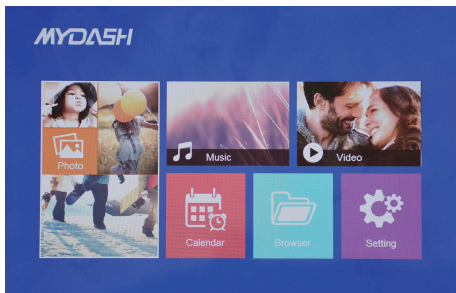
- Insert the power adaptor cable in the unit and connect to the power supply. The unit will turn on automatically.
- Insert a supported memory device (SD/SDHC/MMC card and USB device). Once a device is inserted pictures playback will start automatically.
- Press power on/off switch on the back of the unit to turn on/off.

4. Operating Instruction

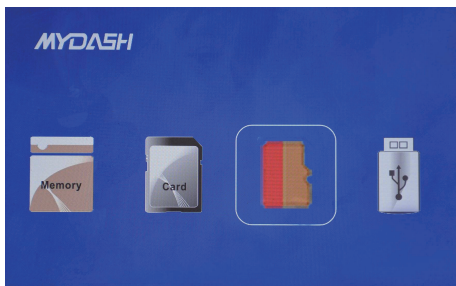
4.1 Main menu

In main menu you can access all the functions of the unit (Photo/Music/Video/Browser/Calendar/Setting).

To navigate inside the menu press ◀/▶ key and confirm with ENTER. Press EXIT during playback to go back to main menu.



In main menu you can select the storage to display by pressing EXIT. Only detected storage will be selectable (by using ◀/▶ keys) and confirm with ENTER.



4.2 Memory

The Frame supports SD/SDHC/MMC Cards and USB 2.0. After inserting a card or USB device, the frame plays automatically the file format you selected in the Auto-start Menu.


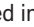

Note:

Make sure there are supported Picture files on the Card or USB device. The unit has a built-in memory (about 220kb) which allows to insert few pictures of small size which can be played and used as screensaver. It is possible to transfer file in the built-in memory by connecting the unit to PC through miniUSB port (the unit will be detected as removable device by Windows) or by using the option Copy available in the File mode (after having inserted a storage which contains compatible files). It is possible to remove files from the built-in memory by connecting the unit to PC or by using the option "Delete file" inside the function "File" (after having selected the built-in memory from the main menu).

5. Photo

Select Photo and confirm with ENTER or press Photo to start slideshow. During playback press EXIT to view all the pictures available in the selected memory. Use navigation keys to select the image and press ENTER to display.

Use ▶|| key to stop/resume slideshow. Pressing ◀◀ it is possible to use Zoom function. By using ▶▶ it is possible to rotate the picture. To switch between previous/next image use ▲/▼ keys.

To play back the slideshow with background Music, (Music must be stored in the same memory device) press . You can use  /  to go to the previous/next background music.



6. Music

Select Music Icon and press ENTER to confirm, press Music key to start playback.

Press ▲/▼ to select a track and confirm with ENTER. Press ►|| to stop/resume playback.

By using ◀◀ / ▶▶ you can rewind or fast forward inside the track.

With ◀◀◀ / ▶▶▶ you can enter the previous or next track directly.

Press VOL+/- to turn up/ down the volume.



7. Video

Select the Video Icon and press ENTER to display the list of video files available in the memory. By pressing Movie key it is possible to start automatically playback of video.

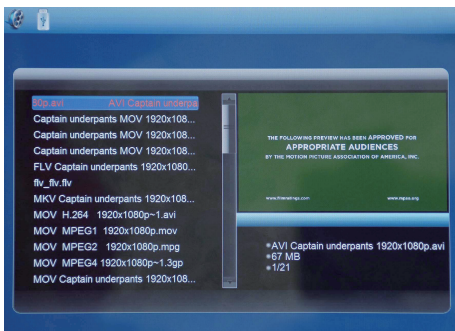
Press ▲/▼ to select the video from the playlist, then press ENTER.

Press VOL+/- to turn up/ down the volume.

During Video playback press ◀◀/▶▶ for fast backward and fast forward.

Press ◀◀/▶▶ to switch to previous or next video.

Press ▶|| to pause/Play. To go back to video list press EXIT.



8. Calendar

Select Calendar in the Main Menu, press ENTER to confirm or press Calendar key to display calendar. The calendar will be shown on the right side of the screen. On the left side a slideshow will start with the supported Picture files available in the selected storage device.

Adjust date with ▲/▼/◀/▶.



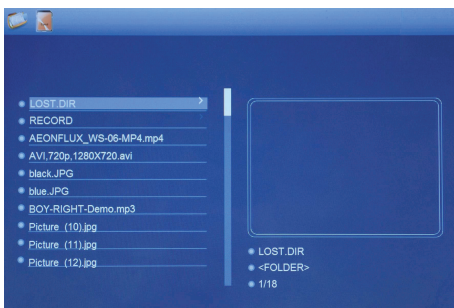
9. File

Select File in the main menu and press ENTER. You can browse all files on your selected storage device.

Press ▲ or ▼ to choose the file and press ENTER to open the file or folder.

Press EXIT to go back to previous folder or main menu.

By pressing ► it is possible to copy (in the built-in memory) or delete the selected file.



10. Setting

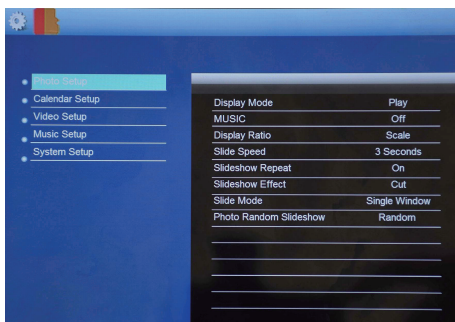
Select Setting in the main menu and you can manage photo, calendar, video, music and system setup.

Choose Setting interface and press ▲/▼ to highlight your selection.

Press ENTER to access the sub-menu items.

Press ◀/▶ to select the available options and confirm with ENTER.

Press EXIT to go back.



10.1 Photo setup

Display mode	Play/Thumbnail	Starts slideshow automatically or display thumbnail.
Music	Off/On	Background music
Display ratio	Full screen/Original size/Scale	
Slide speed	3 Sec./5 Sec./15 Sec./30 Sec./1 Min./5 Min./15 Min./30 Min./1 hour	
Slideshow repeat	On/Off	
Slideshow effect	Random/Fly in/Chessboard/Cut/Erase/Louver/Random Line/Reverse/Cube/Rotate/Off	
Slide mode	Single window/Two windows/Triple windows/Four windows	Number of pictures to display during slideshow.
Photo random slideshow	Random/Sequence	You can choose to play slideshow in sequence or random.

10.2 Calendar setup

Date	YYYY-MM-DD
Clock time	HH:MM
Set time format	24/12
Alarm status	Off/On
Alarm time	HH:MM
Alarm frequency	Once/Every day/Workday/Weekend
Alarm volume	1-10

10.3 Video setup

Play mode	Repeat all/Random/Random repeat/Sequence/Repeat one
Display ratio	Scale/Full screen/Original size

10.4 Music setup

Play mode	Repeat all/Random/Random repeat/Sequence/Repeat one
------------------	---

10.5 System setup

Language	Italian/Slovenian/Spanish/Danish/English/Japanese/French/German	
Grayscale	1-100	
Brightness	1-100	
Contrast	1-100	
Power off	Off/HH:MM	This function allows to turn off the unit at the set time.
Power on	Off/HH:MM	This function allows to turn on the unit at the set time.
Auto-Power frequency	Once/Every day/Workday/Weekend	This function allows to choose when the unit should turn on/off automatically.
Start up mode	Custom mode/Off/Photo/Music/Video/Photo & Music/Calendar/	This function allows to choose which function should start automatically when inserting storage device. Custom mode will start video playback automatically and repeat(if available), if no video it will play photos (if available) or music files(if available).
Motion Sensor	On/Off	This function allows to turn on/off Motion sensor
Sleep Time	1 Minutes/5 Minutes/10 Minutes/ 15 Minutes/30 Minutes/1 hour/4 hour	
Version		
Reset setting	It allows to restore unit to factory default	

11. Screensaver

If no storage device is inserted, after 5 minutes idle it will start slideshow with the pictures saved inside built-in memory (if there are files inside).

12. PC Connection

You can connect the unit to the external equipment by using mini USB Cable (not included) to manage contents (if the unit contains a USB device it will be visible from PC, otherwise it will display built-in memory and eventually SD card inserted).



NOTE: Never disconnect the USB cable during any operational process. Doing so may damage your DPF. Press Safely Remove Hardware Icon on the computer to disconnect the PC-Connection. The unit supports Windows XP/Vista/7/8/10.

13. Troubleshooting Guide

If you come across when using the photo frame on problems, consult the suggested solutions below, and the corresponding sections of this manual. If you need additional assistance, please contact technical support.

No power:	Please check whether the AC-Adaptor is inserted correctly.
Remote control has no function:	Please check whether the battery has power. Replace with a new battery if necessary.
Cannot read the Memory Card or USB-Device:	Please confirm there are supported files on your memory card or USB device. Empty devices cannot be read.
Cannot play the file:	Please confirm if the file format is compatible with the player.
Display too bright or too dark:	Please adjust the brightness or contrast in the setup menu.
No sound:	Please check whether the volume is correct and the player is not in Mute mode.
Copy file error (memory full)	The file you want to copy in the built-in memory is too big, free some space and try again.

CE FCC RoHS  
Made in China

